

Wessex Medical Research

Funding research to fight disease



Registered Charity
No 274839

The newsletter of WESSEX MEDICAL TRUST

Autumn 2012

In this issue:

Child Brain Injury Research—an Appeal	1
Romsey coffee morning	1
Mass Spectrometer inauguration	2
Hospital Caterers dinner	2
London Marathon success	2
Christmas Card deliveries	3
Dates for your diary	3
Innovation Grants	4
New Forest cream tea	4
Christmas Card Order Form	5 & 6

www.wesmed.org.uk

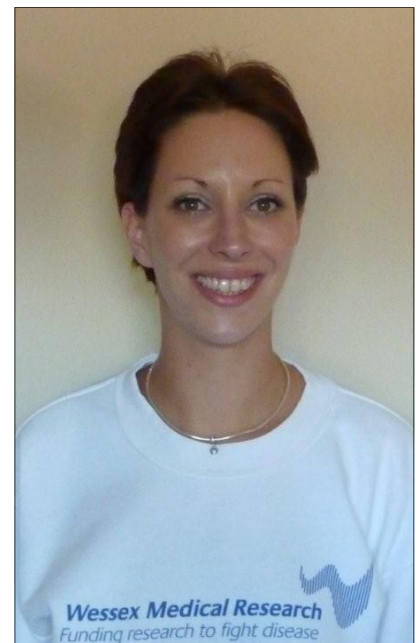
Child Brain Injury Research—an Appeal

WE are very pleased to be launching a special appeal for funding research into Child Brain Injury. A grant application has been made by Mr Aminul Ahmed, Clinical Lecturer in Neurosurgery, and his co-researcher Mr Diederik Bulters, Consultant Neurosurgeon at Southampton. Details are set out in the yellow box. A series of fundraising events are being organised during the autumn and spring (*see Dates for Your Diary on page 3*), culminating in a sponsored Sky Dive by our very own Laura-Jo Smith in March 2013. We are hoping to raise a total of £30,000.

Please support us if you can either by using the JustGiving link on our website www.wesmed.org.uk or by sending a donation to the office (*contact details on page 4*).

Following major head injury, it is vital to check for signs of brain swelling which, if untreated, can severely worsen the original injury. The current method of monitoring this is by drilling a small hole in the skull and inserting a fibre optic probe directly into the brain. This is invasive and is particularly unappealing for children. The team in Southampton has developed an alternative method for adults which involves placing a non-invasive sensor in the ear: rather like a thermometer. It is likely that this technique will work particularly well in children since they have better connections between the brain and the eardrum and therefore the proposed research will aim to extend this technique to children.

If funds permit, the research will also investigate a potential brain tissue repair mechanism for using stem cells which normally lie dormant in the patient's own brain, rather than by introducing foreign cells.



Laura-Jo Smith has been the driving force behind this appeal. A young mother herself, since joining the Wesmed office two years ago she has been particularly impressed by the research work undertaken by Aminul Ahmed in the field of child brain injury. She has organised for herself and her brother-in-law Bob House to undertake a joint Sky Dive over Old Sarum Airfield near Salisbury on Sunday 17 March 2013.

Please support Laura and Bob, in person on the day if you can, but in any event by making a donation on Laura-Jo's JustGiving site: www.justgiving.com/Laura-Jo-Smith

Despite adverse weather affecting turnout, Romsey Volunteer Group were successful in raising nearly £300 at their coffee morning in June. Congratulations!

Mass Spectrometer inauguration

IN May, Derek Coates formally inaugurated the new Mass Spectrometer in the Institute for Life Sciences at Southampton. The machine was purchased with a grant of £470,000 from Wessex Medical Research. As well as making a personal contribution of £250,000 towards this total Mr Coates also facilitated, through his company Healthspan, the raising of a further £110,000 from individual contributions following the successful Channel swim by retired surgeon Mr Roger Allsopp in August 2011. In addition to making a vital and important contribution to the vast amount of ongoing analysis still required in the search for earlier-in-life detection of biomarkers for breast, prostate and ovarian cancers, the arrival of the Mass Spectrometer has had the unexpected but highly beneficial side effect of reviving interest in mass spectrometry across the whole University.



Derek Coates formally inaugurates the Mass Spectrometer watched by (L-R) Mr Roger Allsopp, Professor Paul Townsend (Deputy Director of Cancer Sciences), Professor Iain Cameron (Dean of the Faculty of Medicine) and Dr Spiros Garbis.



We are delighted to announce the return of the LONDON WELSH MALE VOICE CHOIR

(Olympic Choir of choice London 2012—did you see them at the Closing Ceremony?)

who will be performing at Romsey Abbey on Saturday 6th April 2013

Their spectacular performance for WMR in 2009 was a sell-out so, to avoid disappointment, book your seats now with Wendy Burchall on 07792 586243 or email on wendy.burchall@wesmed.org.uk. Prices are £22, £20 and £18: payment will be due and tickets sent in late January 2013. Once again, the event will be introduced by Alastair Stewart.

THE Wessex Branch of the Hospital Caterers Association were this year's organisers of their national conference, which was held in Basingstoke. Stella Gardener, a long-time supporter of WMR, was Conference Secretary. We were very pleased that the Association chose to donate the proceeds of their conference draw, together with several other contributions (amounting in total to nearly £6,000) to WMR. On our behalf, Professor Paul Townsend received a cheque from Stella on the night.

CONGRATULATIONS to all six of our runners in the London Marathon 2012. Together, they managed to raise over £10,000 for various areas of medical research. Many thanks also to everyone who so generously sponsored the runners.



Christmas card deliveries

EVEN before the recent substantial increase in the price of stamps, we were aware that the cost of postage was becoming a significant (if not prohibitive) factor in sales of our Christmas Cards. Therefore, as an experiment, this year we are introducing the possibility of having your card order delivered to your address, provided this is in certain defined postcode areas. Our apologies to those living outside these areas who will not presently be able to benefit.

We will be offering deliveries as follows:

- Salisbury (SP1 and SP2) on **Thursday 1 November**
- New Forest (SO40, SO41, SO42, SO43 & SO45) on **Friday 2 November**
- Romsey and Winchester (SO21, SO22, SO23 SO51 & SO52) on **Tuesday 6 November**
- Southampton (SO15, SO16, SO17, SO19, SO30, SO31, SO32) on **Thursday 8 November**
- Gosport & Lee-on-the-Solent (PO12 & PO13) on **Thursday 15 November**

There will be a flat rate charge of £1 for each delivery. If you would like to take advantage of this arrangement, please indicate on the order form and also be sure, if you are not going to be at home to accept delivery, that you give instructions about where to leave the parcel: the system will not permit re-deliveries!

It will still be possible to have your order delivered by post in the usual way but that will incur an extra cost. Also, if you wish, you may collect your order from our office at Southampton General Hospital at no extra cost—but do please call in advance to ensure that someone will be there to receive you.

Dates for your Diary

2012

- | | |
|--------------|---|
| September 27 | Speaker Supper <i>New Forest</i>
<i>Speakers: Mr Aminul Ahmed, Clinical Lecturer in Neurosurgery
Mr Diederik Bulters, Consultant Neurosurgeon</i> |
| September 29 | Children's Nearly New Clothing and Toy Sale
Marchwood Community Centre. 2.30pm |
| September 29 | Family Skittles Evening
Marchwood Community Centre. 7.30–10.30 pm |
| October 4 | Ladies Night <i>Romsey & Winchester</i> |
| October 20 | Autumn Market, Lyndhurst Community Centre. 10 am–2.30 pm |
| November 1 | Speaker Supper <i>Salisbury</i>
<i>Speaker: Dr Sara Demain, Faculty of Health Sciences</i> |
| November 22 | Speaker Luncheon <i>Gosport & Lee</i>
<i>Speaker: Dr Jon Dawson, Researcher in orthopaedics</i> |

2013

- | | |
|------------|---|
| January 11 | Quiz Night <i>New Forest</i> |
| February 8 | Quiz Night <i>Salisbury</i> |
| March 17 | Sponsored Sky Dive at Old Sarum Airfield, Salisbury. 10 am |
| April 6 | London Welsh Male Voice Choir Concert <i>New Forest</i> |
| June 1 | Midsummer Music Event <i>Romsey</i> |

Items marked in red are in support of our Child Brain Injury appeal

Please check the website for additional activities and give us your active support wherever you can.



For some time now, we have been promoting the idea of recycling used mobile phones and printer cartridges for the benefit of WMR. This is an ongoing appeal so please dig around and see what you can find. You can either send them direct to recycle4charity (go to their website as above for freepost instructions—but remember to tell them it's for the benefit of Wessex Medical Research and give our reference number C16805) or call the office for a freepost envelope.

We are proud to be a member of the Association of Medical Research Charities



Mailpoint 420
Level B
South Academic Block
Southampton General Hospital
Southampton
SO16 6YD

T: 023 8079 4460

E-mail:

wendy.burchall@wesmed.org.uk

www.wesmed.org.uk

Innovation Grants 2012

Once again, the quality of the applications was sufficiently high for the Trustees to award more than the usual five Innovation Grants. The successful applicants, together with their projects (and the customary 'plain English' translation) are as follows. Congratulations to them all.

Dr Christine Cornforth
School of Psychology
[Deferred to 2013]

"An investigation of the prevalence, correlatives and heterogeneity of callous unemotional traits in disruptive behaviour disorders"

Learning to identify and treat callous unemotional behaviour in children

Dr Sara Demain
Faculty of
Health Sciences

"Understanding the rehabilitation burden for families of people with stroke in receipt of Early Supported Discharge"

Measuring the burden of looking after people at home after they have suffered a stroke.

Dr Nicholas Evans
Faculty of Medicine

"To develop a technology to specifically deliver nanoparticles carrying proteins and small molecules to stem cells in order to promote bone repair and regeneration"

Helping new bone to grow by delivering stimulants to where they are needed using nanoparticles.

Dr Ian Galea
Faculty of Medicine

"An innovative measure of progressive disability in multiple sclerosis using continuous electronic physical activity monitoring"

A new way of continuously monitoring progressive disability in multiple sclerosis.

Dr Marc Tebruegge
Faculty of Medicine

"A proteomic approach to the identification of novel biomarkers of tuberculosis"

Identifying tell-tale signatures of infection with tuberculosis from body fluids.

Dr Veronika Jenei
Faculty of Medicine

"The epidermal growth factor receptor substrate Eps8 as a master regulator of pancreatic cancer progression"

Determining whether the progression of pancreatic cancer is due to the presence of a growth factor in the blood.

Dr Massimiliano Mellone
Faculty of Medicine

"Role of the stromal microenvironment in solid tumours and fibrosis: molecular mechanisms regulating myofibroblast differentiation"

How the tissue that surrounds a solid tumour might help it to spread.

In June, the New Forest Group held a Jubilee Strawberry Tea, kindly hosted by group chairman Brian Court and his wife Elaine. For once, the sun shone and some 50 supporters enjoyed a delicious cream tea, generously sponsored by The New Forest Fruit Farm. The event raised a handsome £547.